



Jennett's Park CE Primary School

Head Teacher: Mrs Elizabeth Savage
3 Tawny Owl Square,
Jennett's Park, Bracknell RG12 8EB
T: 01344 301269

secretary@jennetts.bonitas.org.uk

Update to Whole School re Covid Cases

Action for Yr 6 Cohort - Today

17.01.22

Dear Parents and Carers,

We hope you are well. Unfortunately, we have a large amount of staff absence across the school but concentrated now in the Year 6 team. We have also had several new cases in over the weekend within the student cohort for positive Lateral Flow Test (LFT). We are already very thinly staffed in other year groups so cannot move any more staff around further. We already have the maximum supply we could contact from any agency we work with.

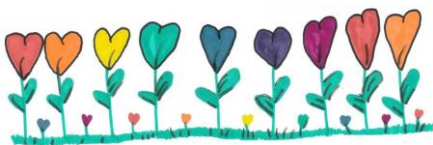
Action for Year 6 Cohort Today Monday 17th January

We have **fourteen current** new cases amongst children in Year 6 both Sabrewings and Sunbirds. This is in the last 10-day period and majority new over the weekend and are of cases of children that have been school so have the potential to spread the virus. In the reverse of the situation of the above, we are able to staff but would appreciate anyone that has not done a LFT in the last 24 hours to come and collect your child from 10:15am onwards today. If this is negative you may bring your child back in this afternoon or tomorrow Tuesday 18th January.

In Year 6 they have been identified as one of those who it is recommended to take **LFD tests for 7 days and if positive then they should isolate and follow the guidance** [COVID-19: guidance for households with possible coronavirus infection - GOV.UK \(www.gov.uk\)](https://www.gov.uk/guidance/covid-19-guidance-for-households-with-possible-coronavirus-infection)

LFD tests can be ordered online: [Order coronavirus \(COVID-19\) rapid lateral flow tests - GOV.UK \(www.gov.uk\)](https://www.gov.uk/order-coronavirus-rapid-lateral-flow-tests) or collected from your local pharmacy or test centre. You can find out where to get LFD tests at: [Find where to get rapid lateral flow tests - NHS \(test-and-trace.nhs.uk\)](https://www.nhs.uk/conditions/coronavirus/covid-19/testing/rapid-lateral-flow-tests/).

If they test positive for COVID-19 then please follow the self-isolation advice from NHS Test and Trace and inform the school.



Update for Whole School

Year Group	Positive Student Cases
Nursery	
Reception	2
Year 1	7
Year 2	2
Year 3	2
Year 4	11
Year 5	6
Year 6	14

This is now 10% of the entire school but concentrated in Year 6.

You will see that Year 4 have a high number of cases but as the majority are not new and towards the beginning of the ten-day period we feel this is more manageable.

We are already following all our heightened guidance as per our risk assessment. This includes separate break times and additional cleaning.

How to stop coronavirus (COVID-19) spreading

There are things you can do to help reduce the risk of you and anyone you live with getting ill with coronavirus (COVID-19): [guidance on how to stay safe and help prevent the spread:](#)

- Get vaccinated – everyone aged 12 and over is eligible for vaccination – see <https://www.nhs.uk/conditions/coronavirus-covid-19/coronavirus-vaccination/> for more information.
- Wash your hands with soap and water or use hand sanitiser regularly throughout the day
- Cover your mouth and nose with a tissue or your sleeve (not your hands) when you cough or sneeze and put used tissues in the bin immediately and wash your hands afterwards
- Meet people outside and avoid crowded areas
- Open doors and windows to let in fresh air if meeting people inside
- Wear a face covering when it's hard to stay away from other people – particularly indoors or in crowded places
- Participate in twice weekly LFD testing following national guidelines (recommended for 11 years and over). We encourage you to log your results here: [Report a COVID-19 rapid lateral flow test result - GOV.UK \(www.gov.uk\)](#)

If your child is in receipt of Free School Meals the kitchen can provide a Jacket Potato for your child that will need to be collected from the school from 11.30am onwards on the day they are off. If you would like the kitchen to provide this then please contact the school office before 9.15am on the day to let them know.

Many thanks for your help in reducing the transmission of COVID-19.

Thank you for everyone who has been offering your positive support. The smiles and stoic grit you show mean a lot to us.

Yours sincerely



Liz Savage, Headteacher of Jennett's Park CE Primary

